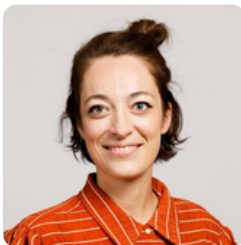




## Présidence



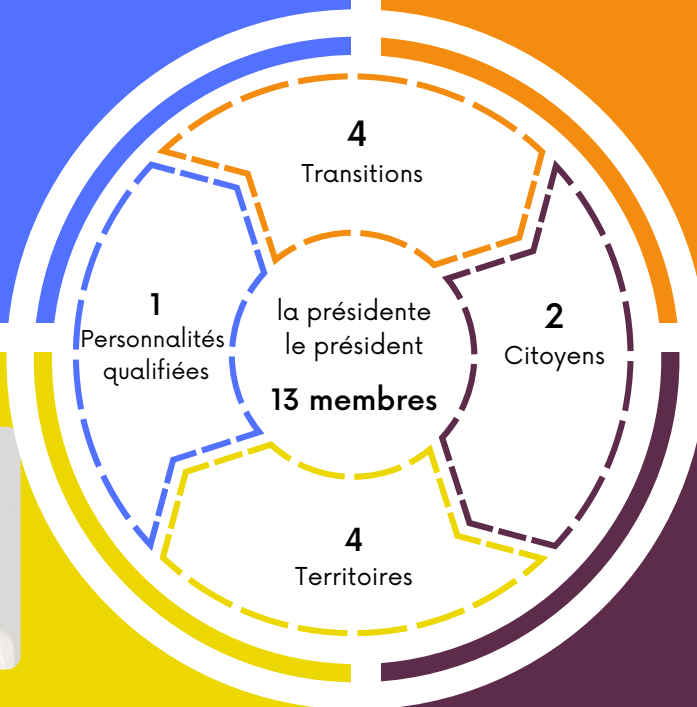
Marie BLANCHARD



Dominique VALCK



Catherine THOUVENIN



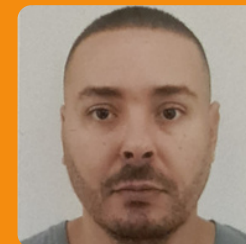
Sandrine REGNIER  
U2P



Marie Jo BURGUN  
Répair Café



Emmanuel ROCH  
Vitrines de Nancy



Mourad ZOUAGHI  
Solidaires



Marie CONRAUX  
Pulnoy



Noëlle EHRHART  
Laxou



Georges BONILLA  
Maxéville



Guy DIDIER  
Laxou



Lamia BENKORTBI



Axel MARTELEUR

Composition  
du Bureau  
27/10/2022